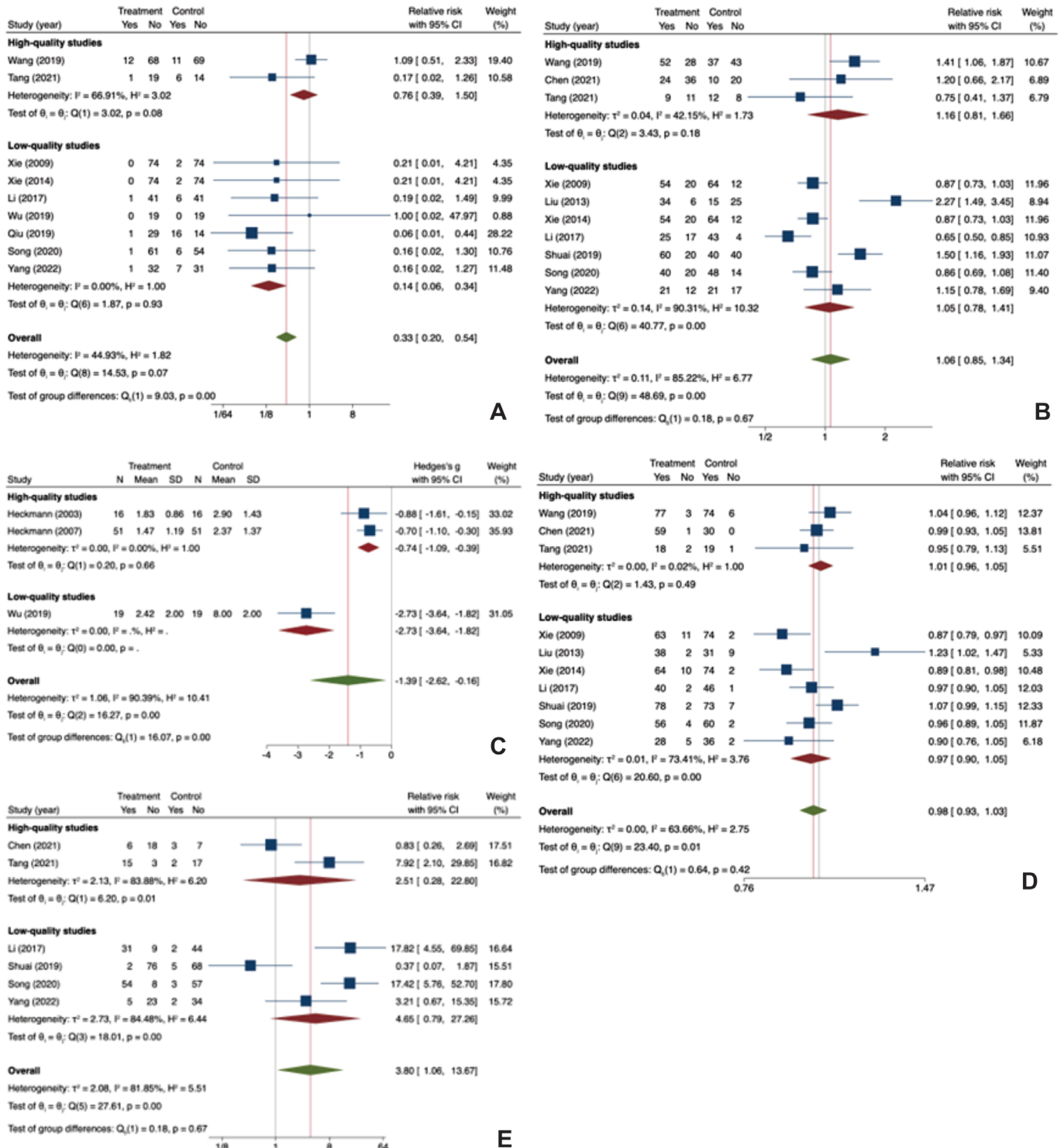


# Tolerability and efficacy of botulinum toxin injection in the treatment of bromhidrosis: a systematic review and meta-analysis of clinical trials

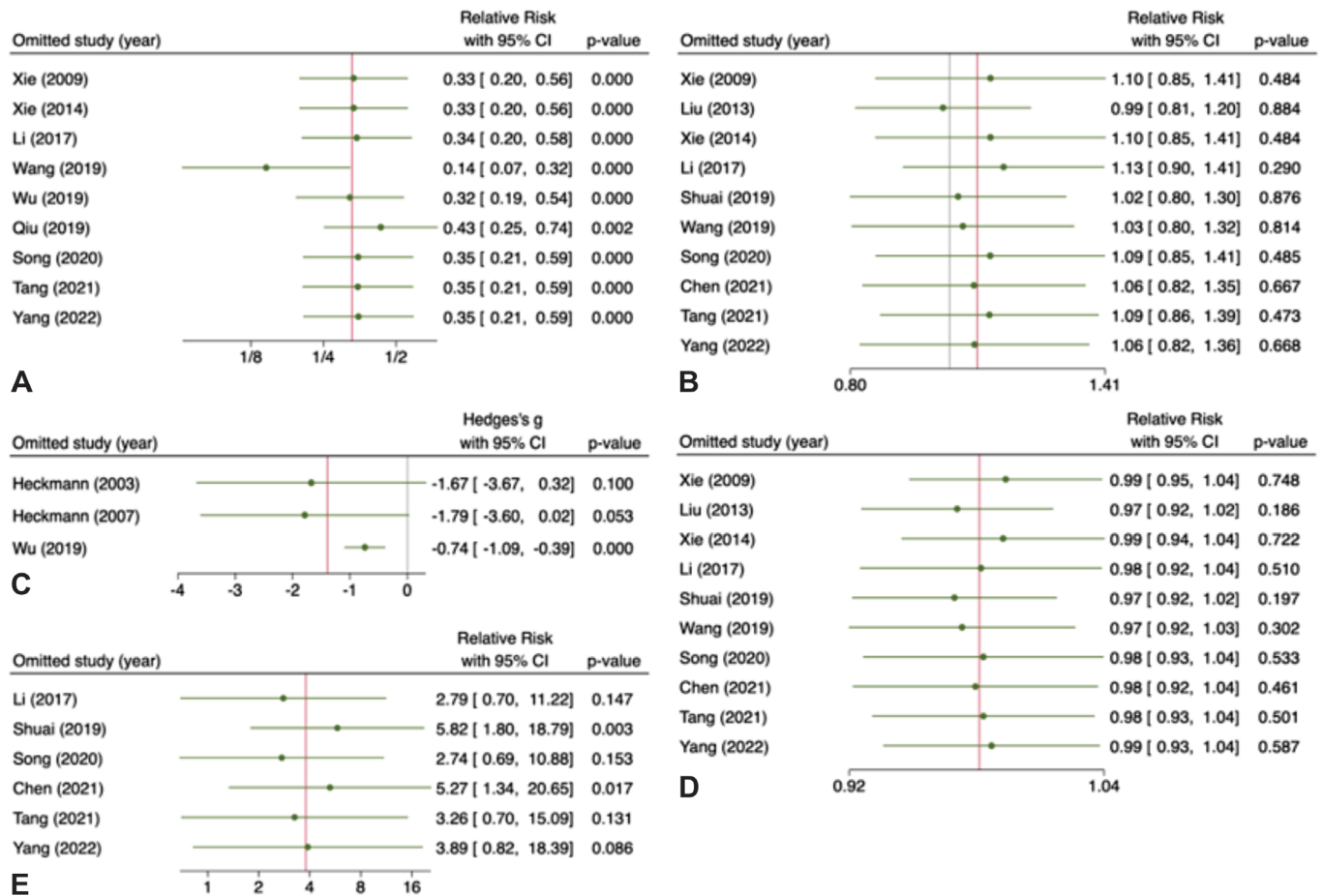
Muhammad Candragupta Jihwaprani<sup>1,2</sup>, Tiara Dinar Ismirahmadani<sup>3</sup>, Yipeng Sun<sup>1</sup>, Ayu Wikan Sayekti<sup>4,5</sup>, Idris Sula<sup>1</sup>, Nazmus Saquib<sup>1</sup>✉

<sup>1</sup>College of Medicine, Sulaiman Al Rajhi University, Bukaryiah, Saudi Arabia. <sup>2</sup>Department of Pediatrics, Sidra Medicine, Doha, Qatar.

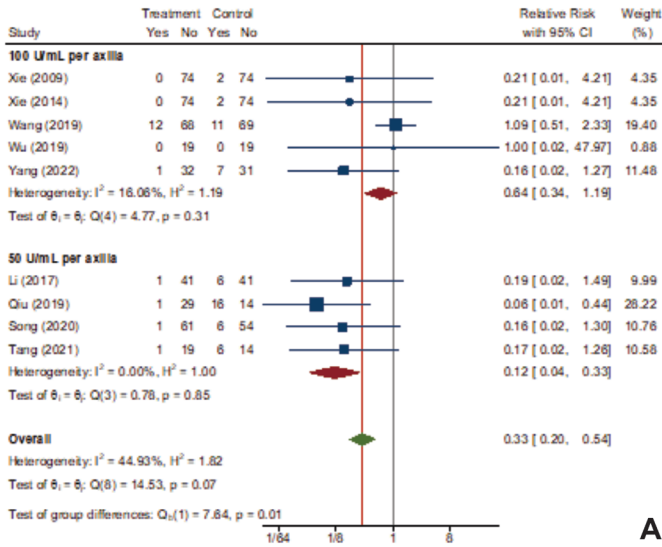
<sup>3</sup>Department of Medicine, University of Ahmad Dahlan, Yogyakarta, Indonesia. <sup>4</sup>Department of Dermatovenereology, PKU Muhammadiyah Hospital, Yogyakarta, Indonesia. <sup>5</sup>Department of Dermatovenereology, University of Ahmad Dahlan, Yogyakarta, Indonesia.



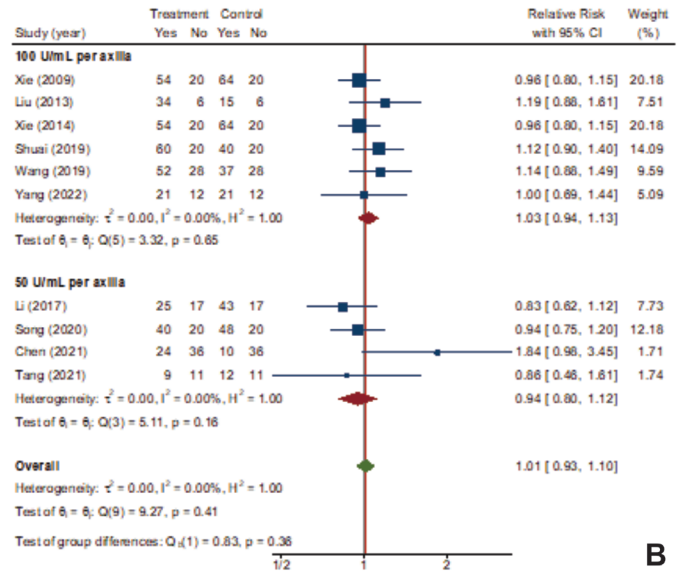
Supplementary Figure 1 | Quality-based subgroup analysis of study endpoints, including adverse events (A), treatment success among non-placebo control arms (B), reduction in odor intensity among placebo-treated controls (C),  $\geq 50\%$  improvement after treatment (D), and recurrence (E).



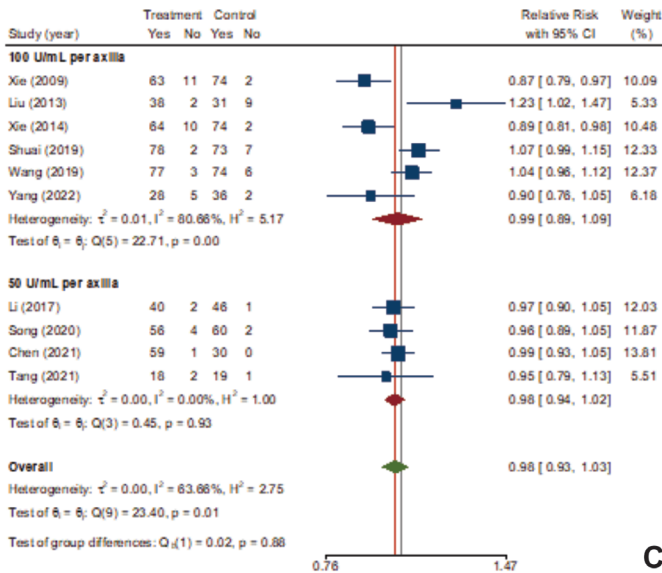
Supplementary Figure 2 | Leave-one-out sensitivity analysis for all study endpoints, including adverse events (A), treatment success among non-placebo control arms (B), reduction in odor intensity among placebo-treated controls (C),  $\geq 50\%$  improvement after treatment (D), and recurrence (E).



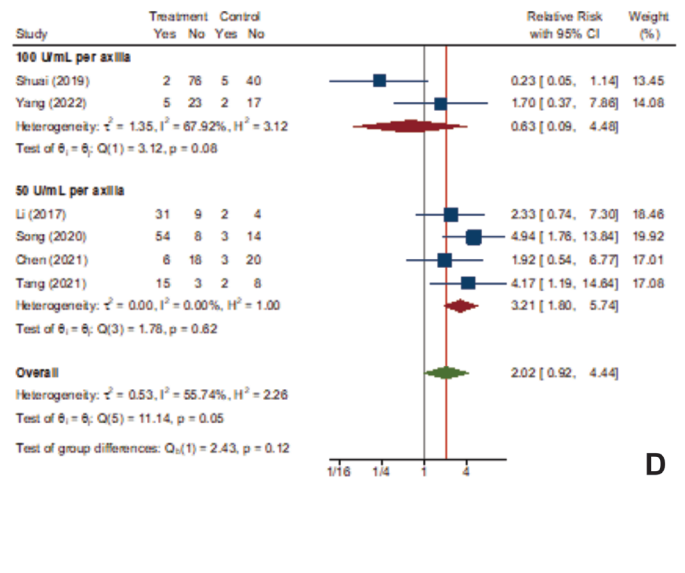
A



B

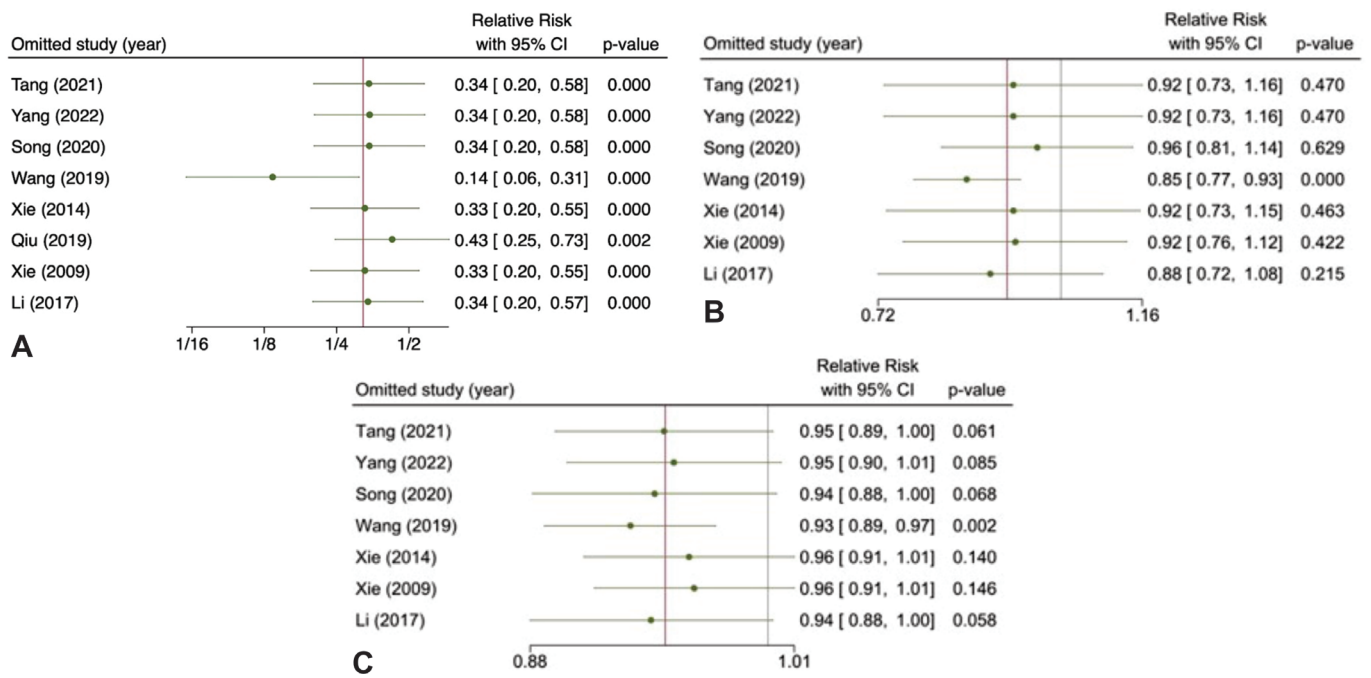


C

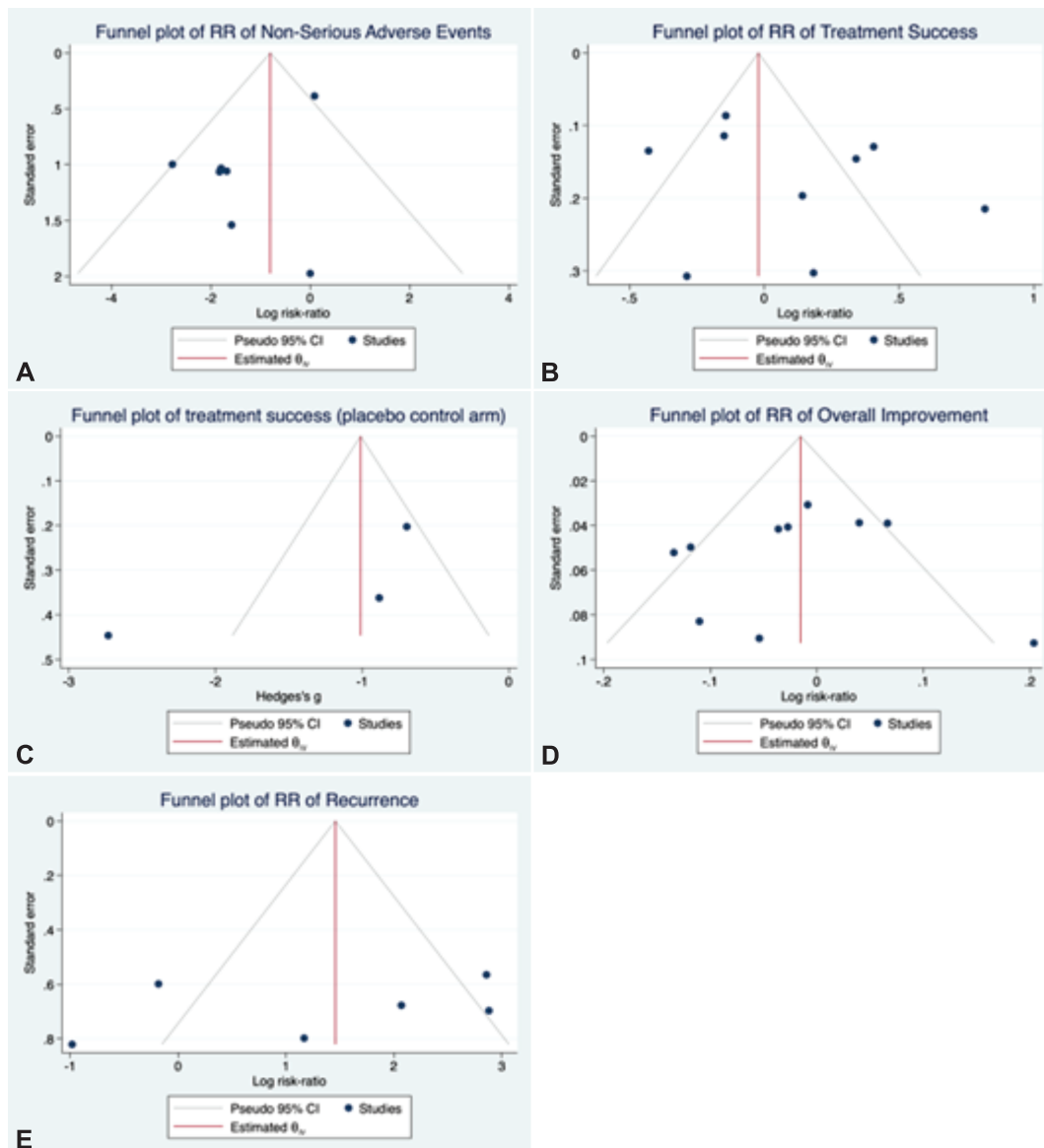


D

Supplementary Figure 3 | Subgroup analysis based on botulinum toxin dose per axilla (50 IU/ml and 100 IU/ml), including adverse events (A), treatment success among non-placebo control arm (B), reduction in odor intensity among placebo-treated controls (C),  $\geq 50\%$  improvement after treatment (D), and recurrence (Fig. E).



Supplementary Figure 4 | Leave-one-out sensitivity analysis of the small skin incision surgery control subgroup, including adverse events (A), treatment success among non-placebo control arms (B), and  $\geq 50\%$  improvement after treatment (C).



Supplementary Figure 5 | Funnel plots and Egger's regression test for overall adverse events (A), treatment success (B) and with the placebo control arm (C), overall improvement (D), and recurrence (E).